

**Built on Experience.**



**ecom**  
A PEPPERL+FUCHS BRAND

Tab-Ex® 03—  
The Next Generation of 8" Android  
Tablets for Use in Hazardous Areas

The new Samsung-based tablet  
from ecom—the undisputed  
standard for mobile working.



Your automation, our passion.

 **PEPPERL+FUCHS**

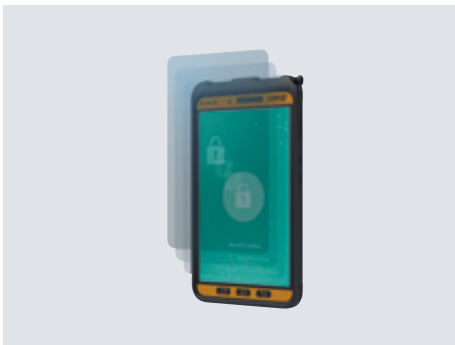
# The Next Generation of 8" Android Tablets for Use in Hazardous Areas

The rugged, highly secure and hazardous area-rated tablet Tab-Ex 03 continues the success story with the 3rd generation of the 8" Tab-Ex series. The Tab-Ex 03 comes in a sleek design with a new high-performance operating system that powers the tablet with industry-leading performance in hazardous areas. The Samsung DeX feature transforms the compact tablet into a full-fledged desktop computer, and additional accessories, peripherals, digital products and services provide maximum flexibility.



## Absolute Reliability, Guaranteed User-Friendliness

The new 8" Android tablet Tab-Ex 03 series from ecom comes in a slim design. Despite the slim form factor, the tablet ensures high performance in Zone 1/21, Div. 1 and in Zone 2/22, Div. 2. The multitouch display can be operated with S Pen and with gloves and offers optimal readability even in direct light. From indoor pharmaceutical applications to harsh environments, the Tab-Ex 03 is designed for use in a temperature range of -20 °C to +55 °C and in the most demanding industries. A proven product for industrial and harsh environments, it represents a long-term strategic partnership with Samsung.



## Advanced Security, Protecting Data and Device

Based on the state-of-the-art Samsung Galaxy Tab Active3, the device ensures high data and device security via Google Android™ operating system and Samsung Knox. The Tab-Ex 03 supports all Knox features such as Mobile Enrollment, Configuration Management and E-FOTA. In addition to biometric authentication and basic protection against malware, privacy hacks and more, the base device, the Samsung Galaxy Tab Active3, is part of the Android Enterprise Recommended (AER) Program. Devices that are Android Enterprise Recommended meet Google's highest performance and security requirements.



## Efficiency to Go, Taking Mobile Working to New Dimensions

Using Samsung DeX mode, the Tab-Ex 03 quickly and easily connects to a keyboard, mouse and monitor in the office for a full desktop experience, and its one-device strategy offers a cost-saving, equivalent alternative to desktop PCs. The active key of the new Tab-Ex 03 can also be assigned individually - for example as emergency key for maximum security. Google ARCore™ enables key augmented reality applications such as remote support and training, as well as customized predictive maintenance tools. These functions support quality assurance and make plants safer.

# High Security Standards, Complete Protection

By combining Samsung Knox with the Android operating system, ecom's Tab-Ex 03 ensures the security of corporate data and processes. The Tab-Ex 03 is one of a select group of mobile devices that are part of the Android Enterprise Recommended (AER) program. Google's AER program includes manufacturers and service providers that meet high standards for device performance, usability and security. This addresses the desire for customized, flexible hardware devices combined with easy-to-manage software and a nearly seamless security architecture.



**Operating System**

- Android™ 12

**Memory**

- 4 GB RAM
- 64 GB internal memory, free available memory 48.6 GB
- optional: 512 GB additional storage via microSD, up to 1 TB possible

**Samsung DeX**

- Connect to keyboard, mouse, and monitor

**Dedicated Keys**

- Free programmable key, e.g., for emergency calls, alarms or push-to-talk (PTT)

**Two Cameras**

- 13 MP camera with autofocus and LED flash + 5 MP front camera
- Optional: Non-camera

**Power**


- Powerful Li-Ion battery 5,050 mAh (Typical) 4,900 mAh (Rated)

**Extended Temperature Range**


- 20 °C ... +55 °C

**Connectivity**


- WLAN 802.11 a/b/g/n/ac/ax (2.4 GHz), Wi-Fi 4, 5, 6 (2.4 GHz + 5 GHz), 2x2 MIMO
- Bluetooth® 5.0
- Wi-Fi Direct
- NFC EMV L1



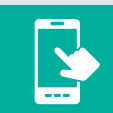
The slim 8" Android Tablet for use in Zone 1/21, Div. 1 and in Zone 2/22, Div. 2




Latest Android™ operating system: quick, safe, and efficient




Connect a keyboard, mouse, and monitor via Samsung DeX mode for a full desktop experience



Ultra-rugged multitouch display can be operated with gloves and S Pen



Based on Samsung's state-of-the-art Galaxy Tab Active3, MIL-STD-810H certified



Digital Products and Services provide a ready-to-use service that ensures quality and security

# Innovative Solutions from a Single Source

Pepperl+Fuchs offers a range of coordinated peripherals, accessories, and software solutions as an ideal complement to the Tab-Ex 03.

## Exploring Mobility

Organizations are starting to realize how mobility solutions can benefit their business. Today, the focus is on technologies that reduce costs and improve efficiency. Game-changing breakthroughs in mobile computing and communication technologies are enabling industries to improve workforce safety and productivity, data quality, and the speed and

accuracy of decision-making. The Internet of Things (IoT) has become increasingly important in the field of industry and will change the way companies deploy labor to use resources more effectively.



### Applications 4.0

- Inspection/maintenance
- Asset management/tracking
- Collaborative working
- Scanning/auto ID
- Process automation/operations
- Lone worker protection/localization (GeoIP)
- Engineering/installation
- Augmented reality (AR)
- Security/safety
- Push-to-talk (PTT)



### Hardware

#### Peripherals

- Scanner
- Camera
- Headset
- Radio speaker microphone

#### Certification

- Ex certifications
- Regulatory
- Wireless certifications

#### Accessories

- Desktop charger/docking
- Spare battery
- Case
- Cradles



### Software

- User management
- Customized roles and rights
- Android Enterprise Recommended (AER)
- Android Zero Touch
- Kiosk mode
- APKs
- API/3rd party



### Safety

- Mobile worker
- Assets
- Data



### Support

- Sales and application engineering
- Service-level agreements
- Service with repair and Ex testing



### Digital Products and Services

- Preconfiguration/staging
- Mobile device management (over-the-air)
- Device analytics

## Digital Products and Services

Digital Products and Services is a solution that combines automated staging, mobile device management, and device analytics. It can also be used as a full-fledged enterprise mobility management system if required.

At the customer's request, ecom's mobile devices can ship from the factory with predefined custom configurations such as security settings, applications, and wireless setup. This allows devices to be used anywhere in the world immediately upon delivery.

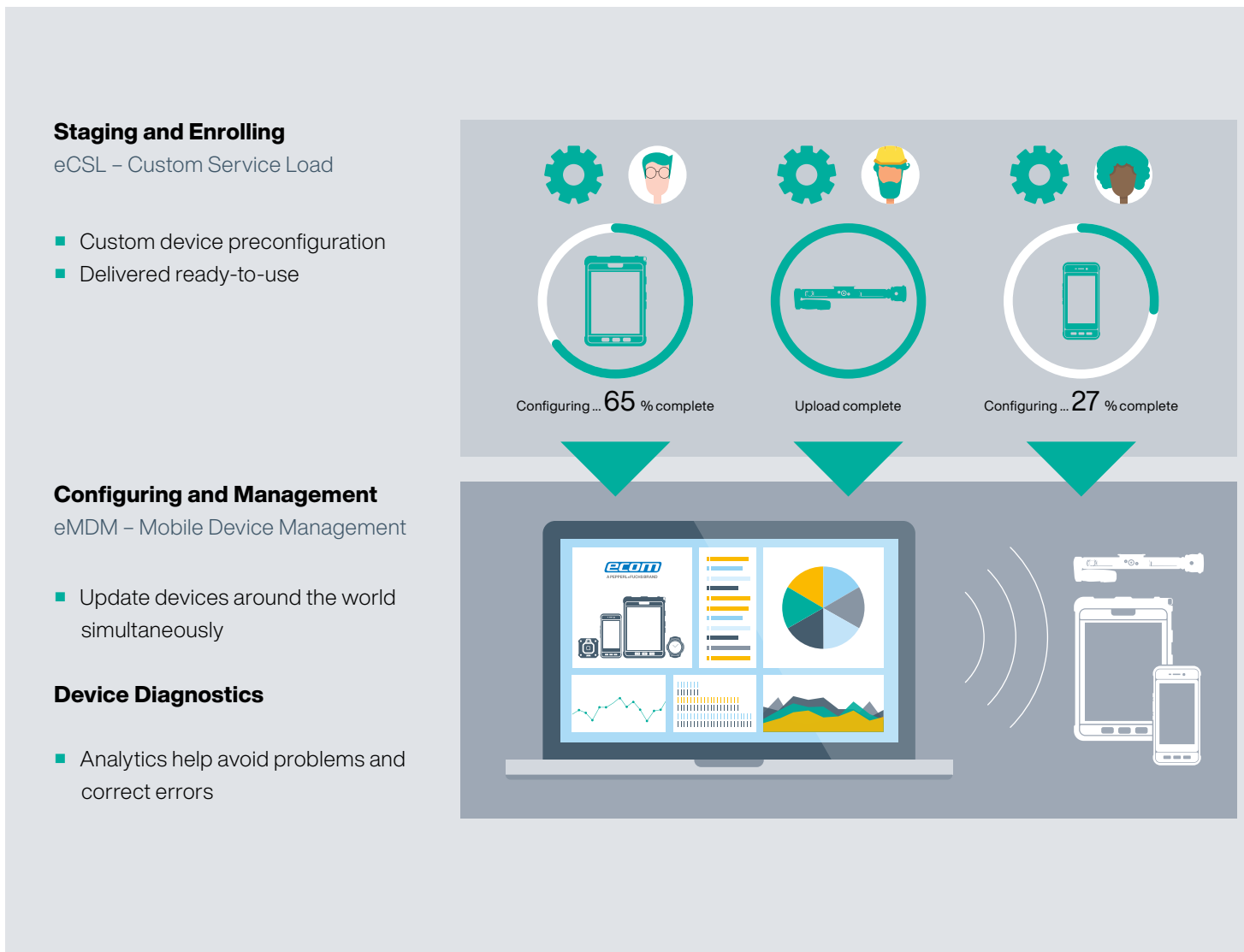
The devices can be managed through ecom's online platform and updated remotely at any time during operation, without the need to send IT staff on-site or to headquarters.

Cloud servers hosted in Germany meet the highest data protection standards and guarantee high data availability and security.

One-time staging and enrolling can also be done internally via ecom's production servers. If required, device diagnostics and analytics can collect real-time operational data and fault analyses to continuously monitor device statuses and troubleshoot preventively or immediately.

Additionally, the platform analyzes historical data to detect critical software events, installations, and other safety-critical processes. A statistical accumulation of events can be used to establish correlations and causalities between software errors, geographical data, and Wi-Fi coverage, for example.

Digital Products and Services is a ready-to-use service that ensures quality and security for all devices. This saves time and valuable resources.



## Accessories and Peripherals

Components such as the Viator Bluetooth HART Interface expand the range of applications for the new Tab-Ex 03 and are perfectly suited for future IIoT solutions.

## Accessories

- LC T03 leather case
- CH T03 chest harness
- Belt clip
- Carrying strap

Additional accessories can be found at [pepperl-fuchs.com/pf-mcc-accessories](http://pepperl-fuchs.com/pf-mcc-accessories)

### Viator Bluetooth HART Interface

Modem



### Ident-Ex® 01

Barcode scanner /  
RFID reader



### RSM-Ex 01 BT

Bluetooth  
Loudspeaker  
microphone



**Glacier Computer**  
603.882.1560 Ext. 6  
[sales@glaciercomputer.com](mailto:sales@glaciercomputer.com)  
[www.glaciercomputer.com](http://www.glaciercomputer.com)

## Optimal Service, Global Support

Based on the Samsung Galaxy Tab Active3, the device stands for tested quality, compatibility, and a long-standing, successful partnership between Samsung and the Pepperl+Fuchs brand ecom. The tablet, which offers absolute safety and a huge range of applications, is based on more than 30 years of experience and a high level of application expertise.

The extensive Pepperl+Fuchs sales and service network provides support around the globe. Specialized technicians are available near you. Additional software integration support is available through our engineering and development teams.

To protect your investment, we offer a three-year service level agreement that covers your mobile assets for your operational needs.



Tab-Ex 03 DZ2



Tab-Ex 03 DZ1

# Digitalizing hazardous areas. Enabling connectivity. Enhancing mobility.



**The Pepperl+Fuchs brand ecom is a leading manufacturer of comprehensive solutions for intrinsically safe mobile computing and industrial communication in hazardous areas.**

Since 1986, ecom has played a key role in the development of explosion protection for mobile devices. The company has proven its technological expertise with a number of innovations and tried-and-tested mobile solutions—from hazardous area-rated smartphones, cell phones and tablets to accessories such as wireless headsets and barcode scanners. ecom's new Digital Products and Services platform completes the portfolio, offering automated staging during device production, mobile device management, and device analytics; the platform can also be used as a full-fledged enterprise mobility management system.

Every solution from ecom combines uncompromising safety with maximum functionality and includes all the necessary approvals and certificates for worldwide use. A global sales and support network with service centers in Germany, the US, Singapore, and the United Arab Emirates rounds off the product portfolio.

Customers around the world know the Pepperl+Fuchs Group as a pioneer and innovator in electrical explosion protection and sensor technology. Building on decades of experience and technical leadership, the company develops components and solutions tailored to the needs of its customers. Solutions for mobile safety and communication from the Pepperl+Fuchs brand ecom enable customer applications to be digitalized quickly and easily. This opens up completely new possibilities and increases the safety, efficiency and transparency of both conventional and Industry 4.0 applications.

For more information about ecom, visit:

[www.ecom-ex.com](http://www.ecom-ex.com) and [www.pepperl-fuchs.com](http://www.pepperl-fuchs.com)

# Your automation, our passion.

## Explosion Protection

- Intrinsic Safety Barriers
- Signal Conditioners
- FieldConnex® Fieldbus Infrastructure
- Remote I/O Systems
- Electrical Explosion Protection Equipment
- Purge and Pressurization Systems
- HMI Systems
- Mobile Computing and Communications
- HART Interface Solutions
- Surge Protection
- Wireless Solutions
- Level Measurement

## Industrial Sensors

- Proximity Sensors
- Photoelectric Sensors
- Industrial Vision
- Ultrasonic Sensors
- Rotary Encoders
- Positioning Systems
- Inclination and Acceleration Sensors
- Vibration Sensors
- Industrial Ethernet
- AS-Interface
- IO-Link
- Identification Systems
- Displays and Signal Processing
- Connectivity

[www.pepperl-fuchs.com](http://www.pepperl-fuchs.com)

Subject to modifications • © Pepperl+Fuchs  
Printed in Germany • Part. No. 70136478 08/22 03



**Pepperl+Fuchs Quality**

Download our latest policy here:

[www.pepperl-fuchs.com/quality](http://www.pepperl-fuchs.com/quality)



**Glacier Computer**

603.882.1560 Ext. 6

[sales@glaciercomputer.com](mailto:sales@glaciercomputer.com)

[www.glaciercomputer.com](http://www.glaciercomputer.com)